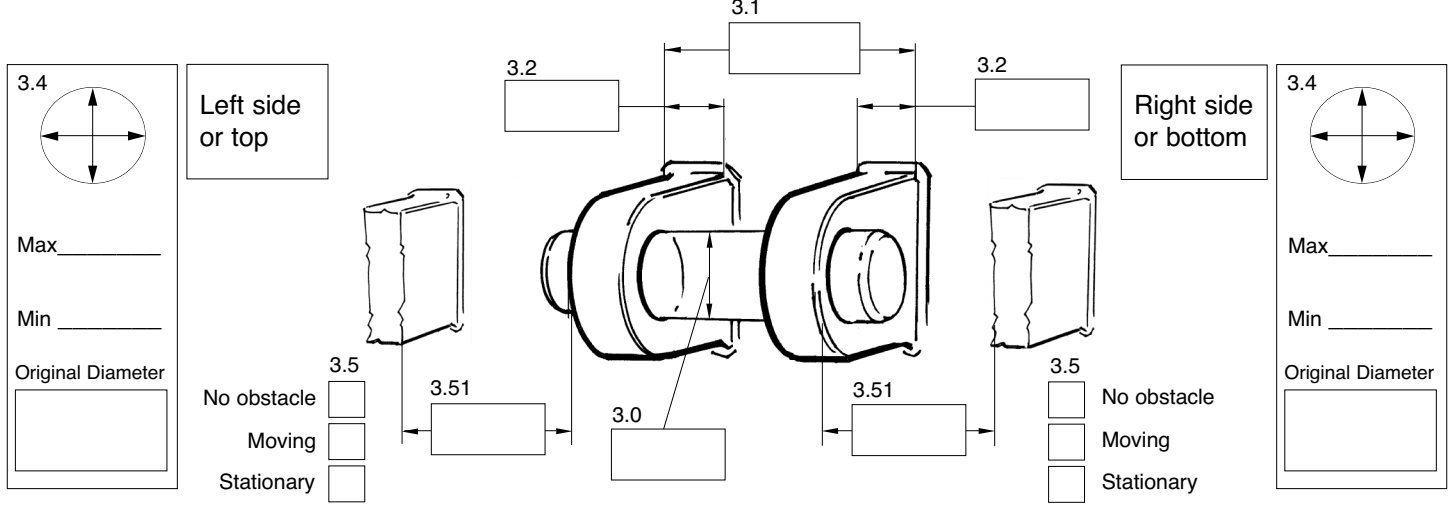


2 2.0 Machine Model: _____ 2.3 Year: _____
2.1 Position Locator Code: _____ 2.4 Production No.: _____
2.2 Original Part Number: _____

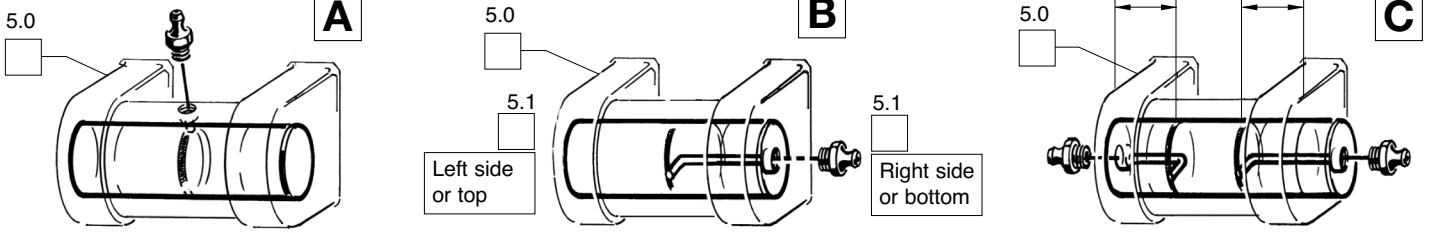
3 3.0 Indicate the original pin diameter.
3.1 Measure the distance between **the outside edges** of the mounting lugs.
3.2 Measure the width of each mounting lug.
3.3 **If any, remove bushings from mounting lugs.**
3.4 Fill-in the original diameter of the lug hole. If the hole is worn, **measure the minimum and maximum wear.**
3.5 Indicate if there is more than 4 inches (100 mm) of space outside the mounting lugs. If there is a moving or stationary obstacle within this space, indicate which type.
3.51 **If there is limited space, measure the distance between the obstacle and the respective mounting lug.**



4 4.0 Indicate if the centerpiece of the pivot is equipped with a bushing or bearing. If more than one bushing, indicate how many and the width.

Bushing(s) How many? _____
 Bearing Width _____

5 5.0 Indicate which type of grease distribution the pivot has.
5.1 If B, indicate from which side the pivot is being greased.
5.2 If C, measure the distance from the outside edge of the mounting lugs to the greasing outlets.



6 6.0 If one of the pivot lugs has a welded-on locking sleeve with the **same diameter tolerance**, indicate on which side and the measurements.

7 7.0 Indicate if the pivot is designed with axial locking of the bearing/bushing. If so, enclose separate drawing or call for assistance.

